

PROSPECTUS - PRESTON MUSLIM GIRLS HIGH SCHOOL

Education with Patience, Modesty, Gratitude, Humility and Sincerity

Introduction

The Preston Muslims Girls high school is an independent Girls School Located in the midst of the Muslim community of Deepdale. The school was established and founded in September 1989 to cater for the needs of the girls in this community.

The school was set up in response to parents concern over sending their daughters to mixed schools and the problems that such an environment brings.

The need to educate Muslim women will remain forever a priority. Their contribution to education in history cannot be over emphasised, there is a need to prepare our daughters for the future and to prepare them for a society where the Muslim identity is challenged everyday and for them to understand the role of Islam in our lives today.

Since its establishment, the school has recognised the importance of the National Curriculum together with spiritual, moral, and cultural values and including Citizenship. All efforts are made to create and maintain an Islamic environment and those with family values.

The school has a good record of achievement and this is reflected in the improved GCSE results during the past few years.

'The Preston Muslim Girls High School is provided by the Muslim Community of Preston to work in partnership with parents providing opportunities for the development of their daughters potential, in an environment that is compatible to the Islamic believes including spiritual, moral, cultural and family values'

Our Aims and Objectives

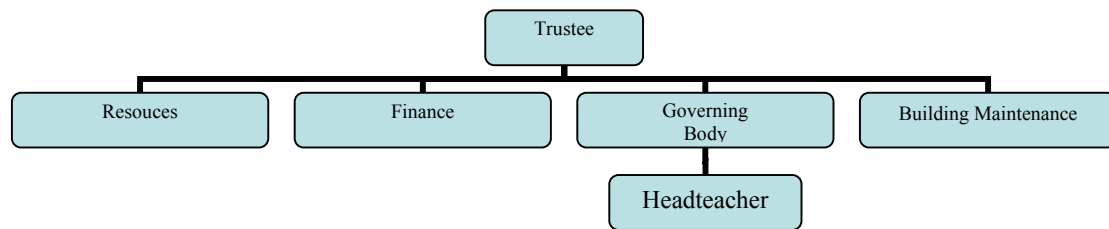
The ethos of the school is one of equality of opportunities for young British Muslim girls enabling them to understand and become integrated into, rather than isolated from, the British society of which they are members.

- ✧ We aim to work together with the parents in providing a friendly, caring, stimulating environment in which the girls are encouraged to reach their full potential.
- ✧ We aim to provide a balanced education within the framework of the national curriculum and the requirements of the Islamic faith and practices.
- ✧ We aim to encourage our girls to discover and develop their physical skills and abilities and use them for the good of mankind.
- ✧ We acknowledge the vital importance of good relationship with fellow human beings. We encourage all members of the school community to share their gifts and work with others in mutual respect, tolerance, and understanding.
- ✧ We recognize the need to draw out the intellectual gifts given to our children, we will help them develop knowledge, skills, and understanding in all curriculum areas and so achieve their fullest potential.
- ✧ Give pupils and understanding and feeling of fear of Allah (taqwa) and instil in them a sense of personal responsibility and accountability for all that they do.
- ✧ Instil in pupils a sense of their Islamic identity, allowing them to live in today's society as practicing Muslims.
- ✧ Equip students with the knowledge and skills that will enable them to progress to further and higher education, gaining qualifications beneficial to themselves, and the wider Muslim Community.
- ✧ Provide an education that caters for every aspect of moral, physical, intellectual, and spiritual development.
- ✧ Encourage pupils to be physically fit and mentally alert leading to a healthy lifestyle in their daily lives.
- ✧ Provide a safe and peaceful learning environment.

School Management Structure

Members from all areas of Preston are represented on the board of trustees.

Subdivided in to four core areas.



Trustees

Responsible to oversee the running and the development of the school.

Resources Committee

Responsible to provide support for the school and the governing body in acquiring educational material which is required or requested for the improvement of the school, for staff and pupils.

Finance Committee

Responsible to generate funding in a professional manner required by the resources team and the school governing body to fulfil their aims and objectives in the development of the school.

School Governing Body

Responsible for standards, targets, curriculum, reporting results and policies.

Building Maintenance Committee

Responsible to create an environment inside and outside school which is warm, conducive to learning, friendly, and befitting for staff, pupils and visitors. Provide positive teaching and learning environment for both staff and pupils.

Head Teacher

Responsible for day to day running of the school, advice and implementation, giving governors information, formulation and reporting progress.

PROSPECTUS - PRESTON MUSLIM GIRLS HIGH SCHOOL

Education with Patience, Modesty, Gratitude, Humility and Sincerity

The School Day

There are five lessons taking place every day.

8:40		Start time and registration
8: 45	8: 55	PSHE/Citizenship
8: 55	9: 45	Lesson 1
9: 45	10: 45	Lesson 2
10: 45	11: 45	Lesson 3
11: 45	12: 30	Lunch*
12: 30	1: 30	Lesson 4
1: 30	2: 30	Lesson 5
2: 30		End of school day

- ❖ Currently the school does not have any canteen facilities and pupils bring packed lunches, which is consumed in a dedicated area in the hall
- ❖ Pupils can buy light refreshments during lunch time from the vending machines.

Curriculum

The school timetable and the curriculum taught have been revised to take into account the requirements of the National Curriculum criteria and the Islamic ethos.

Although the following subjects are taught in accordance with the National Curriculum, where it is appropriate, Islamic views and contributions are highlighted and any historical and/or political comments are discussed in wider context.

Preston Muslim Girls High School teaches the following subjects to Key Stage 3 (SATS) and Key Stage 4 (GCSE).

National Curriculum Requirements	Preston Muslim Girls High School
English	English Language and Literature
Mathematics	Mathematics
Science	Science
Information Technology	Information Technology
Religious Education	Business Studies
Modern Foreign Languages	Religious Education/Islamic Studies
Physical Education	Arabic, Urdu
Design Technology	Physical Education
History	Food Technology
Geography	Textiles (KS3)
Careers Education/Citizenship	Islamic History KS3
	Geography (KS3)

PROSPECTUS - PRESTON MUSLIM GIRLS HIGH SCHOOL

Education with Patience, Modesty, Gratitude, Humility and Sincerity

	Careers Education/ PSHE/ Citizenship
--	--------------------------------------

Discipline

We endeavour to promote and encourage good behaviour through a variety of means. Immediate praise being one of the most effective. Our code of conduct is based on the Islamic principles of the fear of Allah (Takwa), good manners and respect of fellow beings.

The school expects its children to behave in a responsible and respectable manner both inside and outside of the school. Whilst occasional disagreements between pupils are considered normal, physical aggression is discouraged at all times and it is hoped that the parents will co-operate in such matters.

Rules and Regulations for pupils

Do's

- Be punctual
- Wear proper uniform
- Bring your homework
- Treat teachers and other pupils with respect
- Follow the break time rules
- Keep clean and tidy
- Be safe, do nothing to endanger the safety of others.

Don'ts

- Do not wear makeup, jewellery, denim or leather jackets and high heeled shoes
- Do not bring cassettes, mobile phones, cameras, magazines, posters or un-Islamic literature with you.
- Do not hang around in groups
- Do not be disruptive in class
- Do not damage school property
- Do not bully any pupil
- Do not write graffiti
- Do not seal
- Do not use foul language

Incidents of misbehaviour are dealt with in accordance with the discipline procedure of the school, which is available on request.

Attendance

Obviously the more time a pupil spends in school the higher her chances of effective learning. Therefore it is helpful if absences due to holidays and medical appointments are kept to an absolute minimum and every effort is made to arrange these out of school time.

The head teacher can only authorize any extended leave due to religious commitments or cultural reasons after liaising with the parents. Extended leave will not be granted during Yr 9 to Yr 11, as it may hinder the pupils' development and their academic progress.

We insist on regular attendance and punctuality at all times. If a child is absent through sickness we need to be informed as soon as possible.

If a pupil comes to school late for a valid reason or she needs to leave school before home time then she must bring a note from the parent/guardian.

Please note that pupils are not allowed to leave the school premises at lunchtime or at any other time without permission.

Admission

The age for admission to year 7 is 11+

New girls from only a **Muslim school** or a **Darul Uloom** may be admitted in year 8 and 9, and 10 but not in year 11 as this may be affect module tests and coursework.

All applications are to be made by filling in the form available from the school office.

The "admissions committee", adopting the criteria formulated by the schools governing body and the Admissions policy, will all process applications.

All admissions are given in accordance with the schools admissions policy.

The school currently cannot cater for pupils with Special Educational Needs (SEN). We provide assistants in classrooms for pupils whom English is an additional language. The school will make reasonable or alternative adjustments for staff and it's pupils to fulfil it's duties under the Disability Discrimination Act.

For more information, see admission policy.

Finances and Fees

The tuition fees generally cover only a portion of the total cost of running the school. A substantial amount of PMGHS's expenses are covered by generous donations in the form of charitable contributions from the patrons and well-wishers of the school.

The fee charged at Preston Muslim Girls High school is quite modest, and it can be paid in full at the beginning of the school year or in instalments by direct debit/standing order as follows: -

Payment Methods: -

Admission fee £75 when place is offered

One off annual payment £650or

Monthly £65 over a period of 10 months collected on the 15th of each month

The fee is subject to change and is being reviewed by the finance committee. School sometime recommends books that are used throughout pupils five years stay. For this parents will have to pay for the purchase of these books.

On occasions during the course of the year, classes may go out to various places of interest – some local; others further a field to extend the work, which is done in school. Parents are asked to contribute towards costs.

Pupils entering their GCSE's will have to pay the examination fee for each subject entered.

A fully year's fee will have to be paid by the pupil leaving the school anytime during the year.

Parents

We regard education as a partnership between school and home. Only through this partnership our children will be nurtured physically, spiritually, and morally. Just as emphasis is given in the school on Tarbiyah (correct nurturing), we expect parents to uphold and maintain such values at home. Through this partnership we will achieve such pupils who are spiritually and physically capable of assisting and empowering the community (with cultural and family values).

On a formal level we hold parents evening/ days and provide written reports in the summer term.

PROSPECTUS - PRESTON MUSLIM GIRLS HIGH SCHOOL

Education with Patience, Modesty, Gratitude, Humility and Sincerity

On an informal level you are welcome to visit the school at anytime with prior arrangement with the class teacher or the head teacher if you have any worries about your daughter.

School has recently formed PTA which is very much involved in supporting, raising funds and profile of the school. Any parent or well wisher like to take part in these activities should contact the officer incharge of the PTA.

Teaching staff

The school has qualified/experienced staffs, who are trained to deliver high quality education. Staffs have regular INSET and attend personal development courses

Examinations

The school caters for public examinations such as Standardised Tests (SATS') and GCSE's. Pupils also have end of topic/diagnostic tests and twice yearly internal school examinations.

Registration

The school is fully registered with DFES and has regular inspection. See our recent report from OFSTED on www.ofsted.gov.uk/reports

Holiday Leave

The school does not encourage holidays/leave during term time; however in exceptional circumstances please consult the headteacher. It is now school policy that any pupil on unauthorised extended leave will result in their admission being terminated.

Information Available

On request the following information is available to parents of pupils and of prospective pupils:

1. Particulars of the policies relating to bullying, child protection, health and safety, the promotion of good behaviour and sanctions adapted in the event of pupils misbehaving.
2. Particulars of academic performance during the preceding school year, including the results of any public examinations.
3. Details of the complaints procedure adopted by the school, together with details of the number of complaints registered under the formal procedure during the preceding school year.
4. Staff employed at the school with summary of their qualifications.
5. A summary report of the inspection will be sent to the parents of every registered pupil within 15 days of its publication.
6. A full report will be available on request and an administration fee of £5 will be charged.

Means of Contact

If parents want to contact us by means of phone, they are requested to do so during the hours given below.

Proprietor : Mr Y Seedat
279 Ribbleton Lane
Preston
PR1 5ED
(07919 351 478)

Chair of GB: Mr S Zinga
224 Skeffington Road
Preston
PR1 6RY
governors@pmghs.com

Head teacher: Mr Y Seedat
(01772) 651906
E-mail: head@pmghs.com

PTA: Mrs T Kalang
(01772) 651906
E-mail: pta@pmghs.com

PROSPECTUS - PRESTON MUSLIM GIRLS HIGH SCHOOL

Education with Patience, Modesty, Gratitude, Humility and Sincerity

“Knowledge and quality of education is of paramount importance”

It empowers, it wins hearts and minds

**Islam is a complete way of life and your children’s education
should reflect this**

PMGHS is founded on the following principles

Faith

Modesty

Discipline

Honesty

Integrity

Preston Muslim Girls High School

Headteacher

Mr Y Seedat

Deepdale Mill Street, Preston, Lancashire, PR1 6QL

T: (01772) 651906

F: (01772) 651906

E: info@pmghs.com

W: www.pmgghs.com